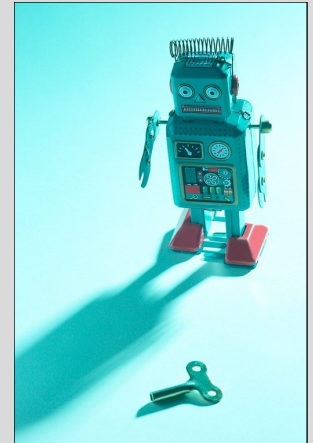


For Immediate Release

January 21, 2007

▶ ***Local Testing Company Offers Free Lead Testing of Toys As Community Service***

Superior, WI. .Local engineering/laboratory company, Twin Ports Testing (TPT) is teaming up with Lead Free Douglas County Task Force to provide free lead testing to our community. "Get the Lead Out" is an afternoon of toy and consumer products testing along with an educational information fair.



Contrary to conventional thought, lead contamination is still a concern in our community, and with recent media coverage and recalls of toys due to unsafe lead levels, "Get the Lead Out" will help parents answer, "is my child's toy safe?"

The event will be held at Superior Middle School on Friday, January 25th from 1:00-6:00 p.m. Participants may bring three items to be tested. In addition to educational pamphlets, Lead Free Douglas County Task Force members and Twin Ports Testing staff will be on hand to answer questions.

Twin Ports Testing will compile data of tested items and make it available after the event.





For Immediate Release

Lead Facts

Contrary to conventional thought, lead contamination is still a concern in our community.

Lead Sources:

- Lead paint, lead dust, lead-contaminated soil, varnishes & stains. Lead can also be found in tap water from lead plumbing.
- Although lead in toys has been a hot topic in the media recently, the primary source of lead contamination is still in the home. However, lead in toys is still a concern.
- Houses built prior to 1978 are most at risk.
- Currently, toy testing is being conducted aggressively by US manufacturers who manufacture toys in other countries, but still of concern are somewhat older toys that have been sitting on shelves, or have been handed down through families.

What can you do?

- Keep paint prior to 1978 in the home in good condition, flaking old paint is a concern. Don't sand or disturb the paint. If paint prior to 1978 is not flaking, you can paint over it, but if removal is needed, then have it tested prior to renovation.
- If you suspect lead exposure, talk to your doctor and have blood tested for lead exposure.

Effects:

- Lead exposure is most dangerous for children under six & pregnant women.
- Nervous system disorders, kidney damage, learning disabilities & speech impediments are possible. As well as muscle, bone & hearing development disorders.
- St. Luke's Pediatric in Duluth is handing our flyer out to patients to promote the event, because doctors have fielded so many questions from concerned parents.
- St. Luke's contact: April Kilgore, Miller Creek Medical, Pediatrics 249-4601
- In adults: Lead exposure can attribute to high blood pressure, memory issues, muscle & joint pain

Twin Port Testing's Qualifications:

- Primarily tests lead in industrial applications but also offer testing in homes.
- Own specialty equipment that requires a nuclear license to house, run and maintain. This equipment has special regulations and rules for transport.
- We are a lead certified company in MN & WI which means we are authorized to perform lead testing.
- We have specially qualified lead risk assessors on staff.

Lead Testing Day: (See attached flyer)

- Sponsored by the Douglas County Task Force & Twin Ports Testing
- Get the Lead Out!
- Educational event for community service.
- 3 toys or household items
- Educate the community
- Information fair with coloring books, flyers and staff from Twin Ports Testing & the Douglas County Task Force in which we serve to answer all your questions.
- From 1-6 p.m., Friday Jan 25th at Superior Middle School